

COMMUNITY SCHOOLS

2024 ANNUAL REPORT



DEMONSTRATED ACADEMIC GROWTH ACROSS THE NETWORK

▶ **38% INCREASE**
IN STUDENT ATTENDANCE
SINCE 2021

▶ **229% INCREASE**
IN FAMILY ENGAGEMENT
SINCE 2021

19,994 STUDENTS
34 SCHOOLS | 5 DISTRICTS

Allentown School District

Brigadier General Anna Mae
Hays Elementary School
Central Elementary School
Francis D. Raub Middle School
Harrison Morton Middle School
Hiram W. Dodd Elementary
School
Jackson Early Learning Center
Jefferson Elementary School
Mosser Elementary School
Luis Ramos Elementary School
Roosevelt Elementary School
Sheridan Elementary School
South Mountain Middle School
Trexler Middle School
Union Terrace Elementary School
Washington Elementary School

Bangor Area School District

Bangor Area High School
Bangor Area Middle School
DeFranco Elementary School
Five Points Elementary School
Washington Elementary School

Bethlehem Area School District

Broughal Middle School
Donegan Elementary School
Fountain Hill Elementary School
Freemansburg Elementary School
Lincoln Elementary School
Marvine Elementary School
Northeast Middle School
Thomas Jefferson Elementary
School
William Penn Elementary School

Easton Area School District

Cheston Elementary School
Easton Area Middle School
Paxinosa Elementary School

Panther Valley School District

Panther Valley Elementary School

★ **NEW IN 2024-25**
SALVAGGIO ACADEMY

Network Partner

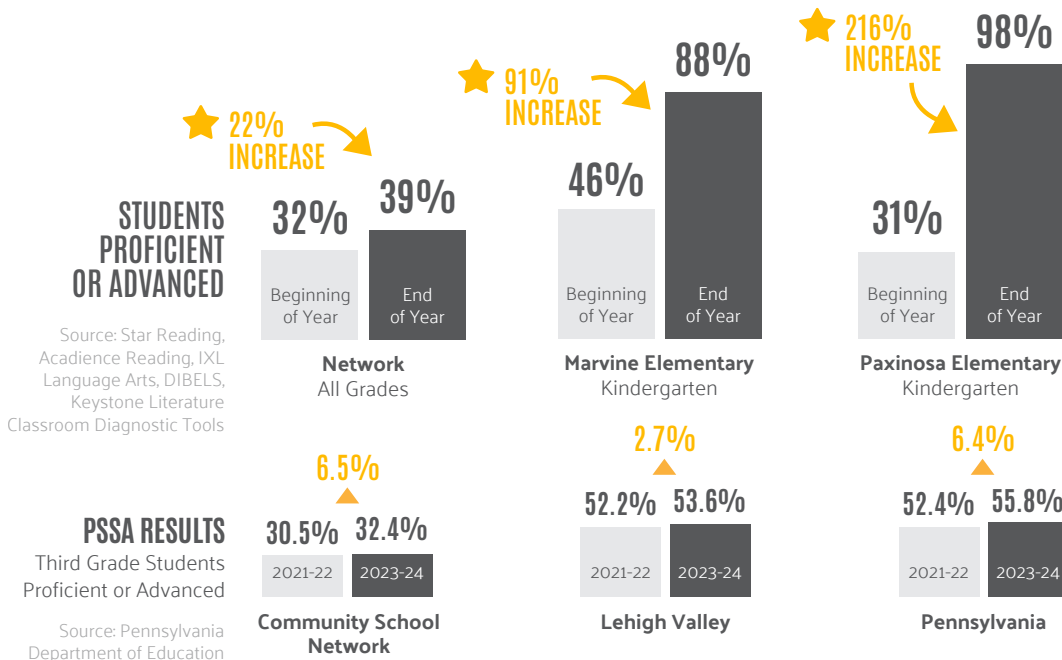


**UNITED
WAY**



LITERACY

DEMONSTRATED ACADEMIC GROWTH ACROSS THE NETWORK

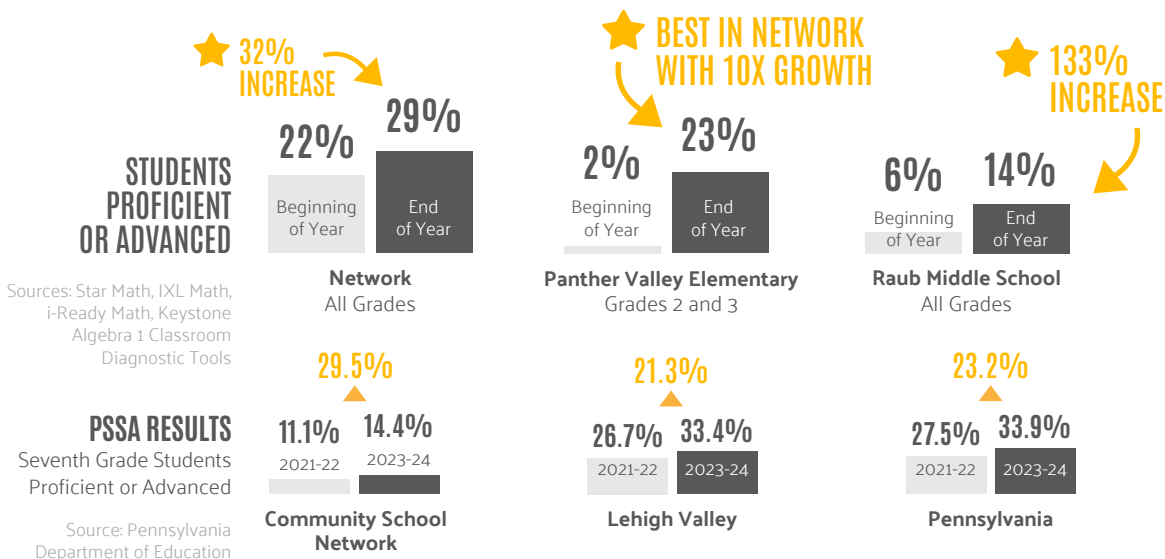


★ COMMUNITY SCHOOLS DEMONSTRATED GREATER GROWTH SINCE 2021-22 THAN THE LEHIGH VALLEY REGION AND PENNSYLVANIA.



MATH

DEMONSTRATED ACADEMIC GROWTH ACROSS THE NETWORK



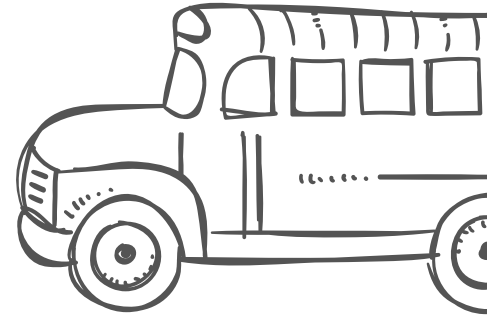
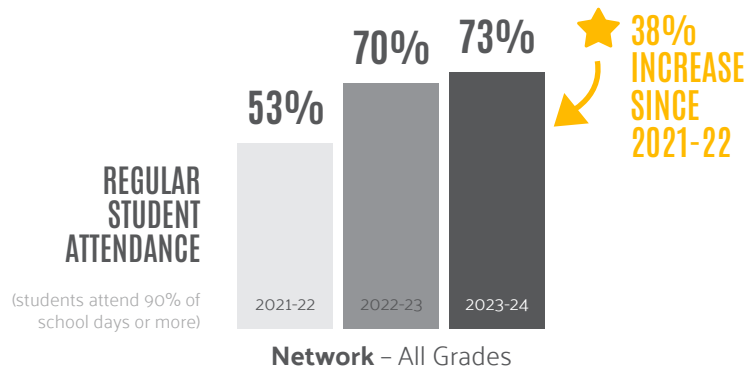
★ COMMUNITY SCHOOLS DEMONSTRATED GREATER GROWTH SINCE 2021-22 THAN THE LEHIGH VALLEY REGION AND PENNSYLVANIA.





STUDENT ATTENDANCE

MORE STUDENTS REGULARLY ATTENDING SCHOOL



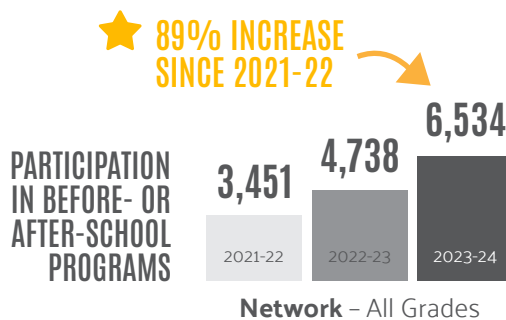
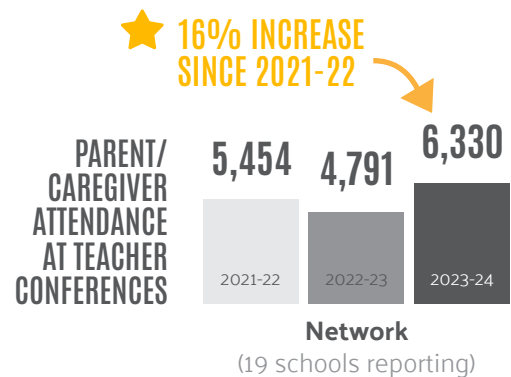
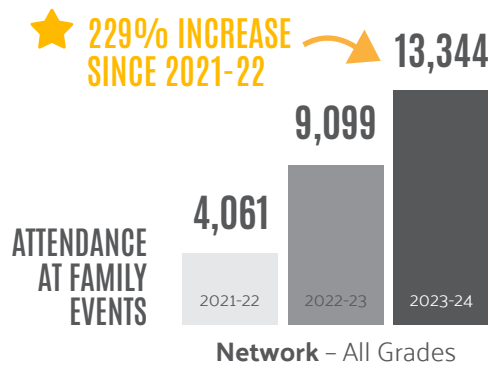
Keys to Success

- Evidence-based, data-driven interventions and incentives at school building, classroom and individual levels
- Attendance teams (15% increase in referrals for services since 2021-22)
- Family Development Specialist
- Basic needs supports that alleviate attendance barriers



STUDENT AND FAMILY ENGAGEMENT

INCREASED PARTICIPATION IN FAMILY PROGRAMS



Keys to Success

- Parent Liaison staff position
- Parents/caregivers are active members of the Community School leadership team
- Annual Family Needs Assessment
- Monthly family engagement events and workshops



COMMUNITY SCHOOLS



STUDENT MENTAL HEALTH

SOCIAL-EMOTIONAL LEARNING ACTIVITIES IMPROVE SCHOOL CLIMATE AND CULTURE

82% of students identified through the Student Assistance Program as needing behavioral health supports were connected to services through mental health, mentoring and support groups.

2,418 STUDENTS REFERRED ▶ **1,973 CONNECTED**

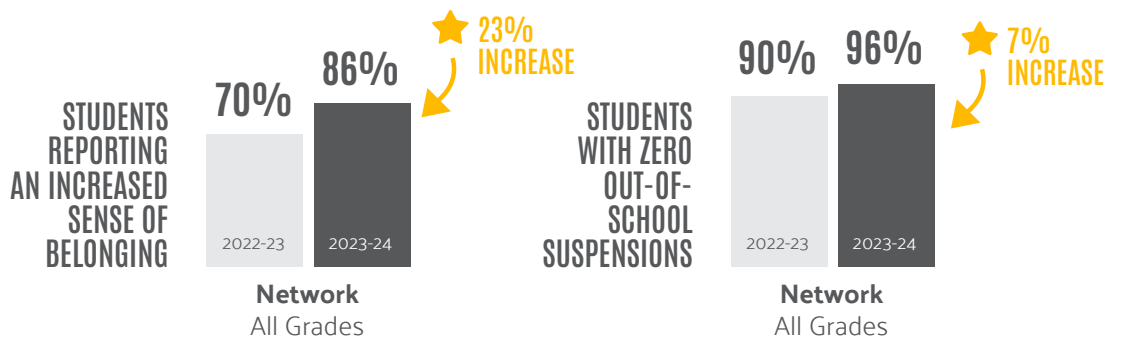
679 students engaged in or connected to mentoring

1,185 students engaged in or connected to support groups

977 students engaged in or connected to mental health supports

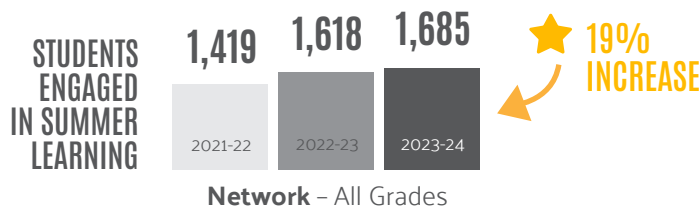
Community School Strategies

- Staff trained in trauma-informed and restorative practices
- Positive Behavior Interventions and Supports (PBIS) program
- School climate survey
- Peace corners in classrooms
- On-site, school-based mental health supports
- Emphasis on staff wellness and teacher self-care, including retreat spaces
- Commitment to promoting student voice
- Social-emotional learning integrated in daily instruction



SUMMER LEARNING

PREVENTED SUMMER LEARNING LOSS



Network - All Grades



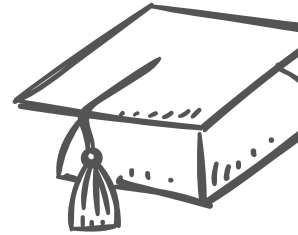


SCHOOL READINESS

PROVIDED HIGH-QUALITY EARLY EDUCATION PROGRAMMING

1,484 CHILDREN accessed high-quality programming through United Way-funded kindergarten readiness supports.

72% of children **met or exceeded** developmental milestones after participating in programming.

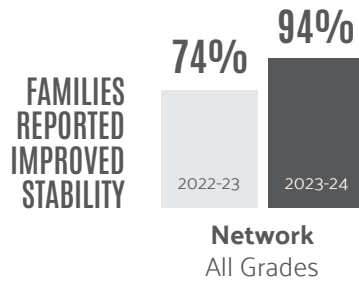


FAMILY STABILITY

INCREASED CONNECTIONS TO FOOD, HOUSING AND FINANCIAL SUPPORTS

3,956 FAMILIES IMPROVED FOOD SECURITY

2,627 FAMILIES IMPROVED ACCESS TO HEALTH CARE



Resources include:

- Food
- Clothing
- Hygiene supplies
- Dental services
- Vision services
- School supplies
- Cleaning and household supplies



COMMUNITY PARTNERSHIPS

EXPANDED AND DEEPEDED CONNECTIONS WITH PARTNERS AND VOLUNTEERS

7,747 VOLUNTEER HOURS

valued at \$246,337

\$624,355

in-kind donations

PARTNERS

Air Products
Allentown School District
Ametek Foundation, Inc.
Bangor Area School District
Dan and Susan Barnes
Bethlehem Area School District
Brown-Daub Family of Dealerships
Rick and Amy Bucher
CAI Learning Academy
Capital Blue Cross

City Center Group
Communities In Schools
of Eastern Pennsylvania
Crayola
Easton Area School District
HNL Lab Medicine
Stephen Jones and
Melanie Sanchez-Jones
Just Born Quality Confections
Lehigh University

Bob and Sandy Lovett
Moravian University
Moses Taylor Foundation
Northampton Community College
NorthStar Construction Management, Inc.
PPL Corp.
St. Luke's University Health Network
Topper Foundation
United Way TeenWorks
United Way Women United
Vitaallic