

BROUGHAL

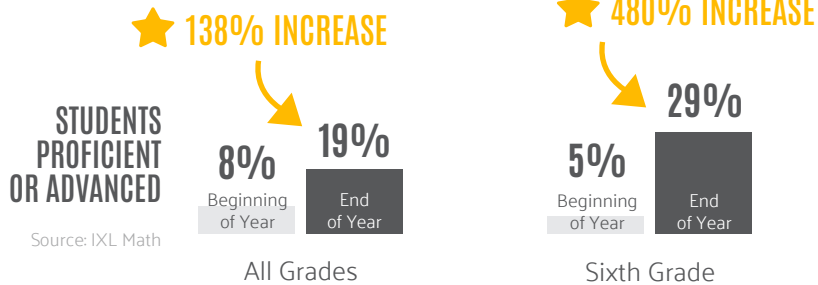
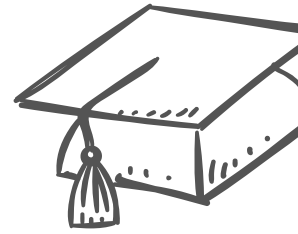
Middle School

501 STUDENTS



MATH

DEMONSTRATED SCHOOLWIDE ACADEMIC GROWTH

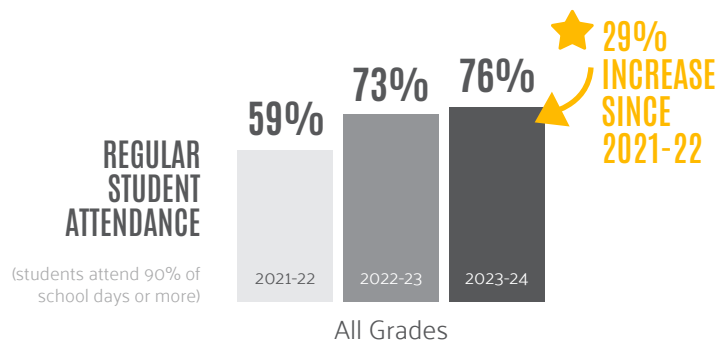


58% OF STUDENTS ADVANCED THEIR MATH SKILLS BY AT LEAST ONE GRADE LEVEL



STUDENT ATTENDANCE

MORE STUDENTS REGULARLY ATTENDING SCHOOL



Keys to Success

- Family Development Specialist home visits
- Student Attendance Improvement Plans in collaboration with families
- Basic needs supports



COMMUNITY PARTNERSHIPS

EXPANDED AND DEEPENED CONNECTIONS WITH PARTNERS AND VOLUNTEERS

189 VOLUNTEER HOURS

valued at over \$6,000



UNITED WAY

School Partners



BROUGHAL

Middle School

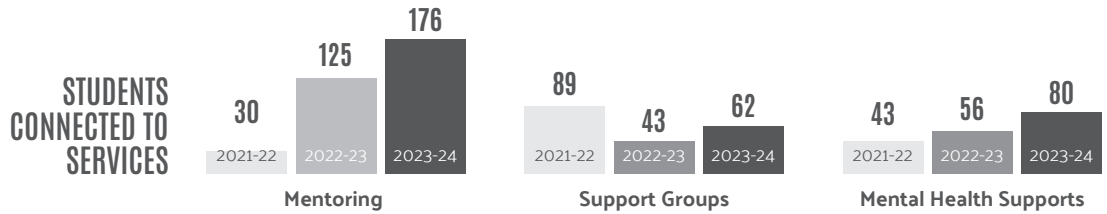


STUDENT MENTAL HEALTH

SOCIAL-EMOTIONAL LEARNING ACTIVITIES IMPROVE SCHOOL CLIMATE AND CULTURE

100%

of students identified through the Student Assistance Program as needing behavioral health supports were connected to services through mental health programs, mentoring and support groups.



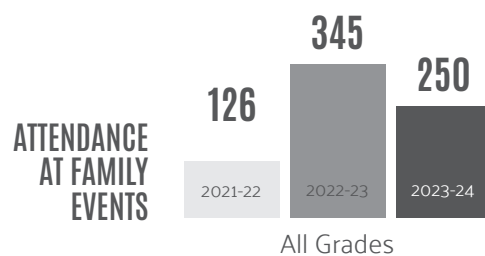
Keys to Success

- Social Emotional Learning integrated in daily instruction
- Commitment to promoting student voice



STUDENT AND FAMILY ENGAGEMENT

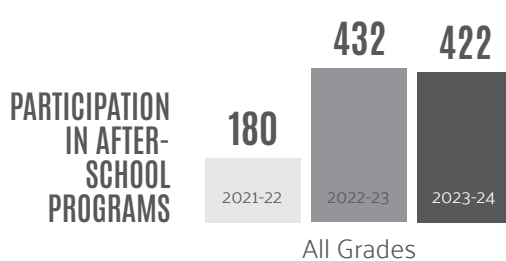
INCREASED PARTICIPATION IN STUDENT AND FAMILY PROGRAMS



★ **98% INCREASE SINCE 2021-22**

Keys to Success:

- Parent workshops
- Active Family Teacher Organization
- Family Needs Assessment



★ **134% INCREASE SINCE 2021-22**

Keys to Success:

- Student-led clubs
- Lehigh Homework Club – support and exploration of education and career pathways



UNITED WAY

School Partners



BROUGHAL

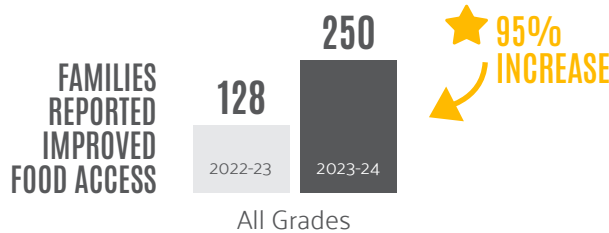
Middle School



FAMILY STABILITY

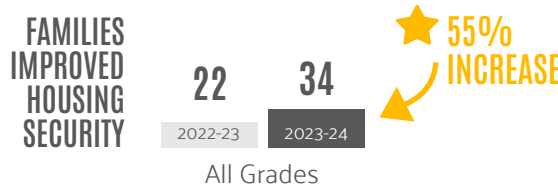
INCREASED CONNECTIONS TO FOOD, HOUSING AND FINANCIAL SUPPORTS

250 FAMILIES improved food access through Moravian Freezer Ministries who partnered with Second Harvest Food Bank and the Community Food Closet to deliver fresh produce to all Bethlehem Community Schools, bi-weekly throughout the year.



All Grades

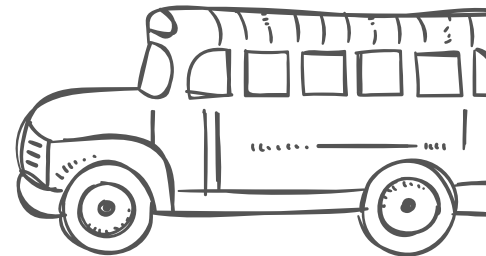
34 FAMILIES improved housing security through housing support services provided by New Bethany, PA 211 and Turning Point of Lehigh Valley.



All Grades

95 STUDENTS accessed health care through dental and vision vans provided by St. Luke's University Health Network

★ FIRST YEAR SINCE 2021 THAT 100% OF STUDENTS REFERRED FOR HEALTHCARE SUPPORTS WERE CONNECTED TO SERVICES



UNITED WAY

School Partners

